

## **Appendix E – SOCIOECONOMIC STUDY**

**GREEN RIVER AREA DEVELOPMENT DISTRICT**

# KY 69 Scoping Study – Hancock County

---

## Socioeconomic Study

Revised June 2015

Prepared for  
Kentucky Transportation Cabinet (KYTC) – Division of Planning



Prepared by  
Green River Area Development District



This document was prepared in cooperation with the Kentucky Transportation Cabinet.

## Contents

Introduction .....	3
What is Environmental Justice? .....	4
Methodology.....	5
Project Area - KY 69 Scoping Study .....	6
Study Findings .....	8
Population by Persons of Racial Minority Origin .....	8
Population by Persons of Hispanic or Latino Origin.....	10
Population by Persons Age 65 Years and Older.....	12
Population by Persons below Poverty Level.....	14
Population by Disability Status .....	16
Population by Persons with Limited English Proficiency .....	18
Conclusion.....	20
Appendix.....	21
Appendix A: Methodology from KYTC.....	22

## Introduction

This report presents an overview of the findings for selected socioeconomic characteristics in the KY 69 Scoping Study of Hancock County. The objective of the study is to complete a corridor planning study to identify and evaluate improvements to the KY 69 corridor between the Ohio County line and the intersection with US 60 in Hancock County, Kentucky.

The information in this report outlines 2009-2013 American Community Survey (ACS) statistics in and near the project area using tables, charts, and maps. The data presented in this document is intended to highlight areas of concern that will require additional analysis should any project be advanced to future phases. Statistics are provided for minority, elderly, poverty status, limited English proficiency (LEP), and disabled populations for the nation, state, county, city, and block groups located within the project area.

This information is intended to aid the Kentucky Transportation Cabinet (KYTC) in making informed and prudent transportation decisions in the project area, especially with regard to the requirements of *Executive Order 12898: Federal Actions to Address Environmental Justice in Minority Populations and Poverty status, Populations* (signed February 11, 1994). Executive Order 12898 states:

“...each Federal agency shall make achieving environmental justice part of its mission by identifying and addressing, as appropriate, disproportionately high and adverse human health or environmental effects of its policies, and activities on minority populations and poverty status, populations...”

The project study area is located in Hancock County on the KY 69 corridor between the Ohio County line and the intersection with US 60 in Hancock County. According to the 2010 census, the county has a total area of 199 square miles (520 km<sup>2</sup>), of which 188 square miles (490 km<sup>2</sup>) (or 94.4%) is land and 11 square miles (28 km<sup>2</sup>) (or 5.6%) is water. Hancock County was formed in 1829 from portions of Breckinridge, Daviess, and Ohio counties. The county is named for John Hancock, President of the Continental Congress and one of the signers of the Declaration of Independence. Of the 120 counties in Kentucky, Hancock ranks 108 in square miles. The northern border of the county lies along the Ohio River. The county seat is Hawesville and the largest city is Lewisport. According to the 2009-2013 ACS, Hancock County has a population of 8,608 persons. Hancock County is included in the Owensboro, KY Metropolitan Statistical Area.

Hancock County is composed of 7 census tracts. The planning study area is composed of the following Census Tract Block Groups (BG):

- Census Tract 9601, BG 1
- Census Tract 9603, BG 1
- Census Tract 9603, BG 2

## What is Environmental Justice?

The U.S. Department of Transportation (DOT) outlines three primary Environmental Justice Concepts as:

1. To avoid, minimize, or mitigate disproportionately high and adverse human health or environmental effects, including social and economic effects, on minority populations and poverty status, populations.
2. To ensure the full and fair participation by all potentially affected communities in the transportation decision-making process.
3. To prevent the denial of, reduction in, or significant delay in the receipt of benefits by minority population and poverty status, populations.

The U.S. DOT order defines minority as:

1. Black (a person having origins in any of the black racial groups of Africa);
2. Hispanic (a person of Mexican, Puerto Rican, Cuban, Central or South American, or other Spanish culture or origin, regardless of race);
3. Asian American (a person having origins in any of the original peoples of the Far East, Southeast Asia, the Indian subcontinent, or the Pacific Islands); or
4. American Indian and Alaskan Native (a person having origins in any of the original people of North America and who maintains cultural identification through tribal affiliation or community recognition).

A minority population is “any readily identifiable groups of minority persons who live in geographic proximity, and if circumstances warrant geographically dispersed/transient persons...”

Low-income, is defined in U.S. DOT Order (5610.2) as “a person whose median household income is at or below the Department of Health and Human Services (HHS) poverty guidelines.” A low-income, population is “any readily identifiable group of low-income, persons who live in geographic proximity, and, if circumstances warrant, geographically dispersed/transient persons...”

A disproportionately high and adverse effect on a minority or low-income population means an adverse effect that:

1. Is predominately borne by a minority population and/or low-income population or
2. Will be suffered by the minority population and/or low-income population and is appreciably more severe or greater in magnitude than the adverse effect that will be suffered by the non-minority population and/or non-low-income population.

Elderly and disabled populations (also used in this analysis) are not specifically recognized under the definition of an Environmental Justice community. However, the U.S. DOT specifically encourages the early examination of potential population of the elderly, children, disabled, and other populations protected by the Title VI of the Civil Rights Act of 1964 and related nondiscrimination statuses.

Limited English proficiency (LEP) is a term used in the United States that refers to a person who is not fluent in the English language, often because it is not their native language. Both LEP and English-language learner (ELL) are terms used by the Office for Civil Rights, a sub-agency of the U.S. Department of Education.

## Methodology

The data was collected using the method outlined by the KYTC document “Methodology for Assessing Potential Environmental Justice Concerns for KYTC Planning Studies”. The demographics of the affected area should be defined using U.S. Census Bureau data and the percentages for minorities, poverty status, elderly, LEP, and disabled populations should be compared to the Census tracts and block groups, the county as a whole, the entire state and the United States.

The primary source of data for this report is the 2009-2013 US Census Bureau American Community Survey including tables:

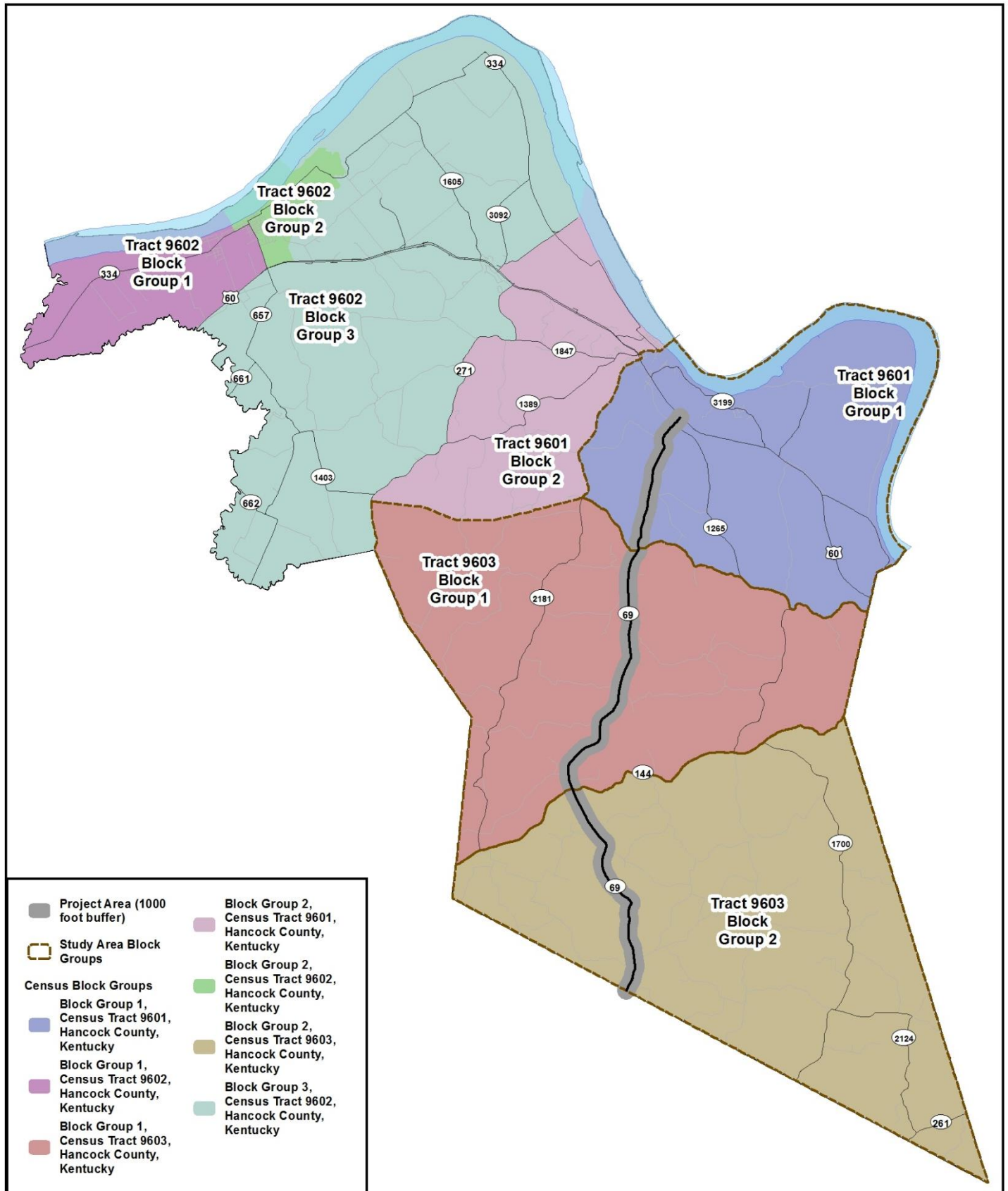
- B01001 - Sex by Age
- B03002 - Hispanic or Latino Origin by Race
- B16004 - Age by Language Spoken at Home by Ability to Speak English for the Population 5 Years and Over
- B17021 - Poverty Status of Individuals in the Past 12 Months by Living Arrangement
- C23023 - Sex by Disability Status by Full-time work status in the past 12 months for the population 16 to 64 Years

The data presented in this document is intended to highlight areas of concern that will require additional analysis should any project be advanced to future phases.

The Census tables in this report include the total number and percentages for minorities, elderly, low-income, LEP, and disabled population levels for the census tract, city, county, state, and nation. This report uses the population percentages for Hancock County as the reference threshold for identifying target populations. The county numbers were selected as the reference threshold because the project is completely within the county limits. The county numbers most likely provide a better snapshot of the overall population characteristics of the one census tract in the study area as opposed to the United States or state percentages.

The methodologies used in this planning document are appropriate for identifying areas of concern in small urban areas and potential project corridors. However, during future phases of project development a more detailed and robust analysis would be required for the NEPA documentation when assessing the potential for adverse and disproportionate impacts to poverty status, and minority populations.

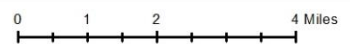
# Project Area - KY 69 Scoping Study



Project Area (1000 foot buffer)	Block Group 2, Census Tract 9601, Hancock County, Kentucky
Study Area Block Groups	Block Group 2, Census Tract 9602, Hancock County, Kentucky
<b>Census Block Groups</b>	Block Group 2, Census Tract 9603, Hancock County, Kentucky
Block Group 1, Census Tract 9601, Hancock County, Kentucky	Block Group 3, Census Tract 9602, Hancock County, Kentucky
Block Group 1, Census Tract 9602, Hancock County, Kentucky	
Block Group 1, Census Tract 9603, Hancock County, Kentucky	

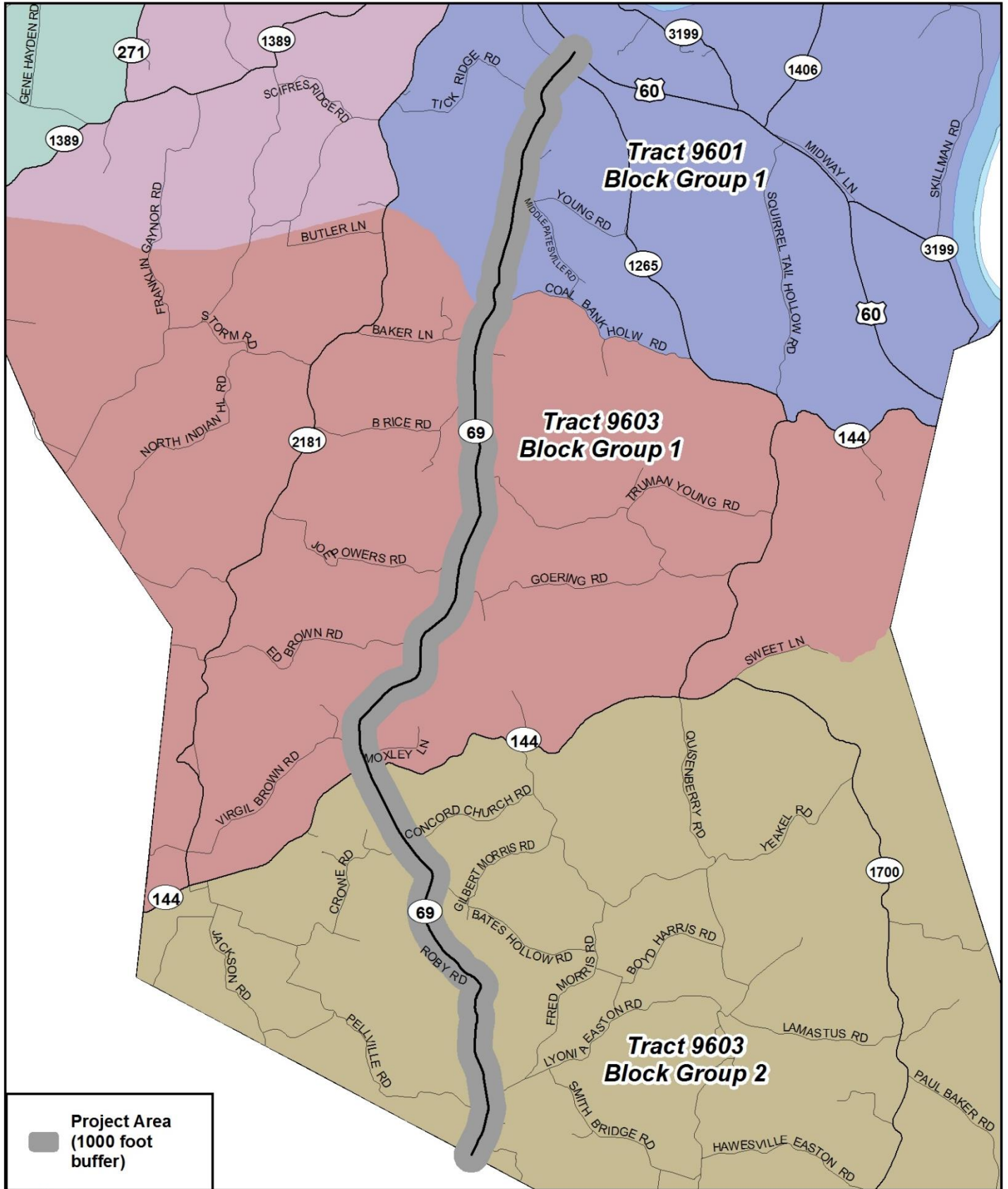


Source: United States Census 2013 American Community Survey  
 This map was produced in cooperation with the Kentucky Transportation Cabinet

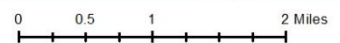




# Project Area - KY 69 Scoping Study



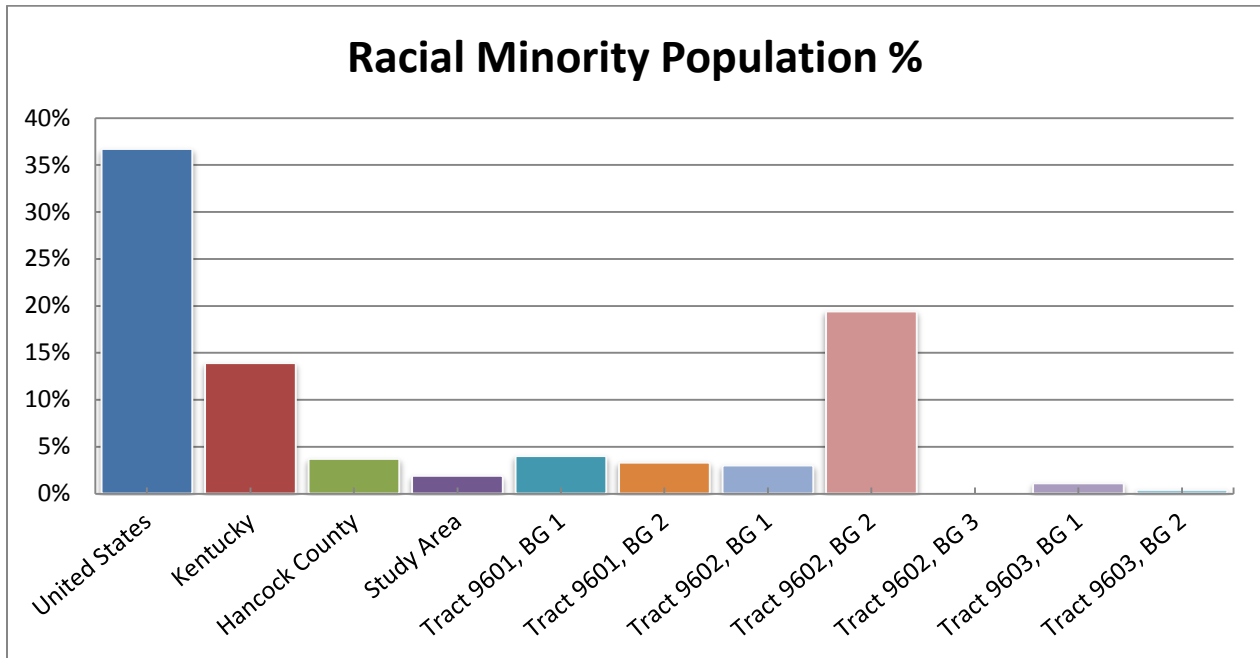
Source: United States Census 2013 American Community Survey  
 This map was produced in cooperation with the Kentucky Transportation Cabinet





## Study Findings

### Population by Persons of Racial Minority Origin

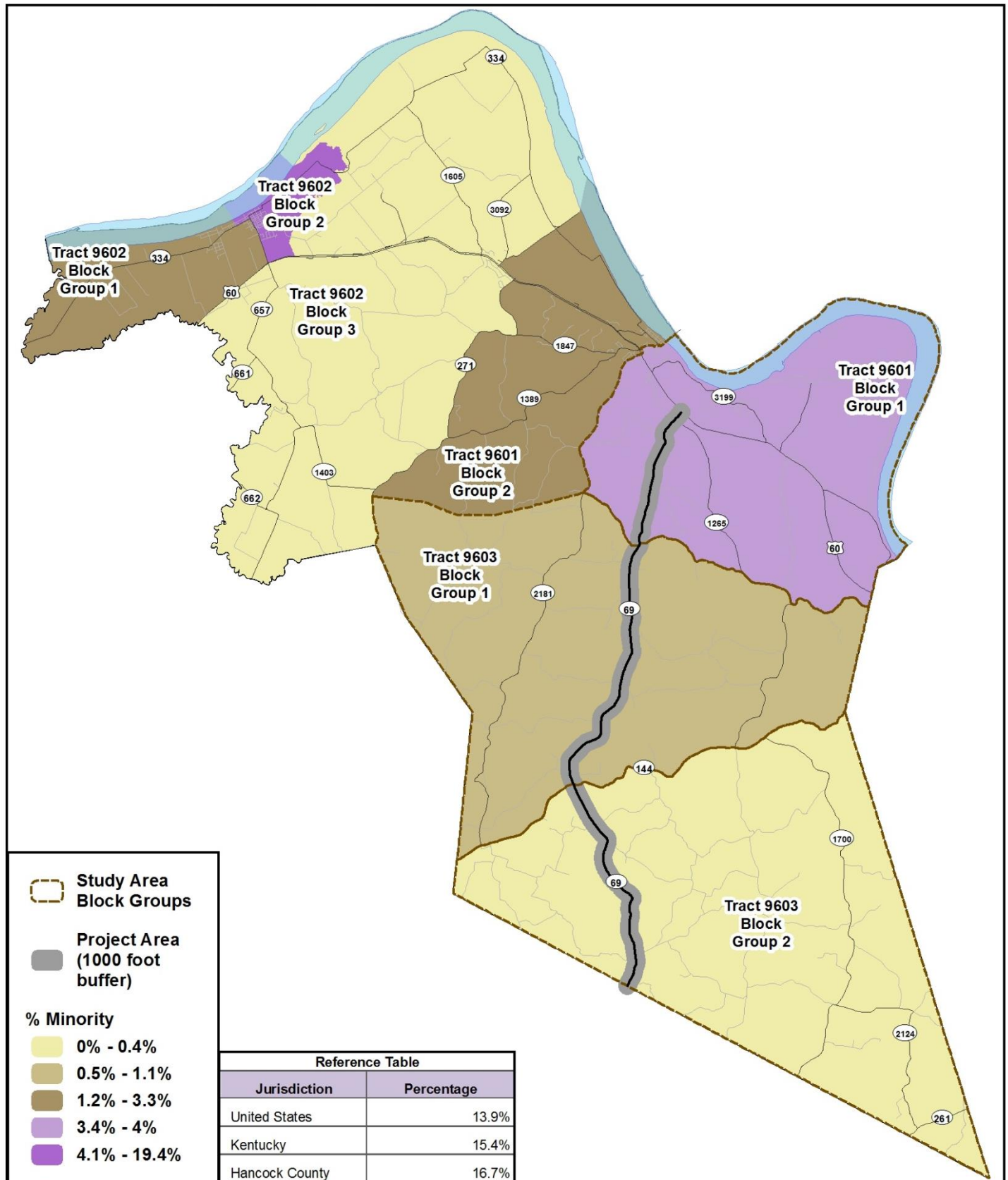


Racial minorities in the United States make up 36.7% of the population, but in Kentucky that percentage drops significantly to just 13.9%. Hancock County displays a lower percentage of racial minorities than that of the state with 3.7% being reported as racial minorities by the 2009-2013 American Community Survey. Block Group (BG) 1 of Census Tract (CT) 9601 has a minority population accounting for 4% of the CT's population which is above the percentage for the county. BG 2 of CT 9602 has a minority population of 19.4% which is above the percentage for the county and state.

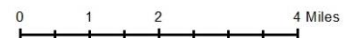
	Total Population	Minority Population	Minority (%)
<b>United States</b>	311,536,594	114,486,242	36.7%
<b>Kentucky</b>	4,361,333	608,141	13.9%
<b>Hancock County</b>	8,608	318	3.7%
<b>Study Area</b>	3,671	71	1.9%
<b>Tract 9601, BG 1</b>	1,267	51	4.0%
<b>Tract 9601, BG 2</b>	1,669	55	3.3%
<b>Tract 9602, BG 1</b>	795	24	3.0%
<b>Tract 9602, BG 2</b>	865	168	19.4%
<b>Tract 9602, BG 3</b>	1,608	0	0.0%
<b>Tract 9603, BG 1</b>	1,449	16	1.1%
<b>Tract 9603, BG 2</b>	955	4	0.4%

Source: US Census Bureau, 2009-2013 American Community Survey - Table: B03002

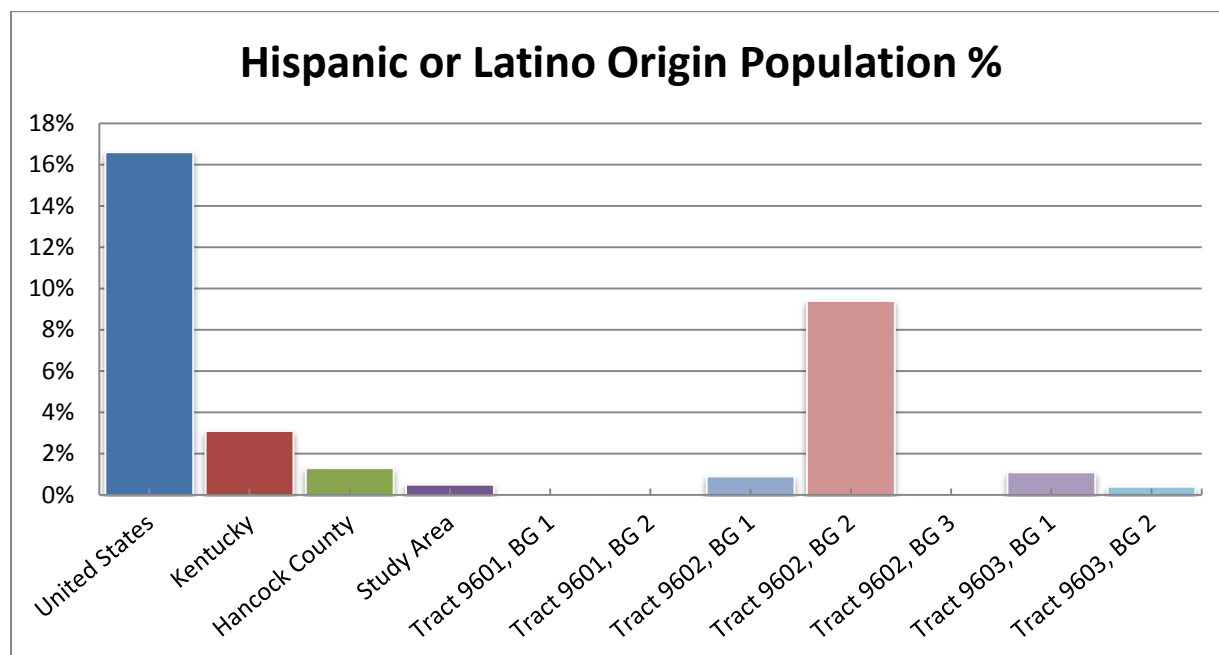
# Population by Persons of Racial Minority Origin



Source: United States Census 2013 American Community Survey  
 This map was produced in cooperation with the Kentucky Transportation Cabinet



## Population by Persons of Hispanic or Latino Origin



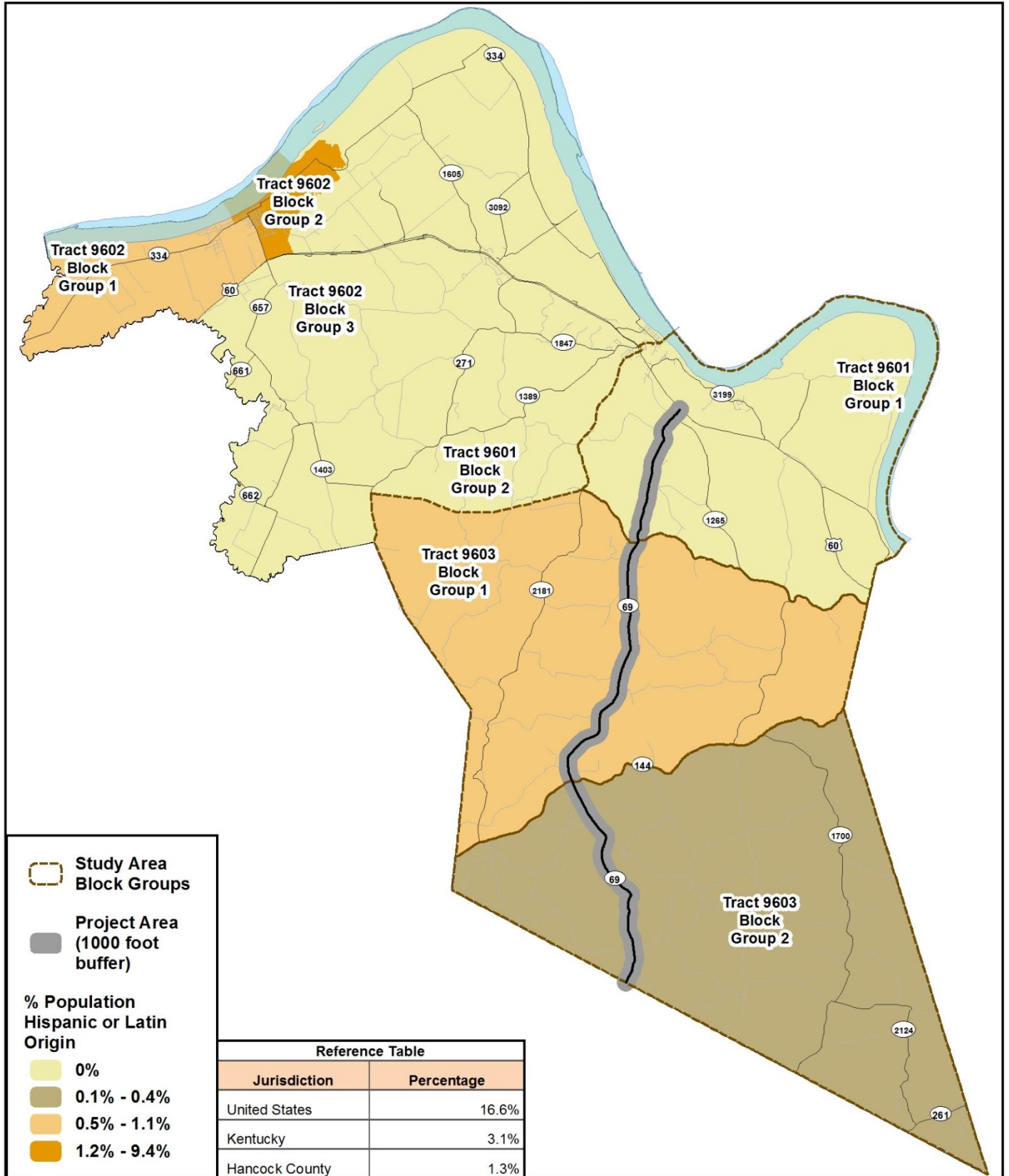
Persons of Hispanic or Latino origin are an ethnic minority group growing at a rapid rate nationwide. In the United States this group represents 16.6% of the total population. In Kentucky only 3.1% of the population was reported as being of Hispanic or Latino origin on the 2009-2013 ACS. Hancock County has a lower representation of Hispanic or Latino individuals than that of the state with 1.3% of the county's population indicating they belong to this ethnic minority. The 2009-2013 ACS reported that Block Group (BG) 2 of Census Tract (CT) 9602 consists of 9.4%.

	Black or African American Alone (%)	American Indian and Alaska Native Alone (%)	Asian Alone (%)	Native Hawaiian and other Pacific Islander alone (%)	Some other race alone (%)	Two or more races (%)	Hispanic or Latino Origin (%)*
United States	12.2%	0.7%	4.8%	0.2%	0.2%	2.1%	16.6%
Kentucky	7.7%	0.2%	1.2%	0.0%	0.1%	1.6%	3.1%
Hancock County	1.1%	0.1%	0.0%	0.1%	0.1%	1.0%	1.3%
Study Area	0.5%	0.0%	0.0%	0.0%	0.0%	0.9%	0.5%
Tract 9601, BG 1	1.5%	0.0%	0.0%	0.0%	0.0%	2.5%	0.0%
Tract 9601, BG 2	0.8%	0.5%	0.0%	0.3%	0.0%	1.6%	0.0%
Tract 9602, BG 1	0.4%	0.4%	0.0%	0.0%	1.4%	0.0%	0.9%
Tract 9602, BG 2	7.1%	0.0%	0.0%	0.0%	0.0%	3.0%	9.4%
Tract 9602, BG 3	0.0%	0.0%	0.0%	0.0%	0.0%	0.0%	0.0%
Tract 9603, BG 1	0.0%	0.0%	0.0%	0.0%	0.0%	0.0%	1.1%
Tract 9603, BG 2	0.0%	0.0%	0.0%	0.0%	0.0%	0.0%	0.4%

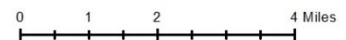
Source: US Census Bureau, 2009-2013 American Community Survey - Table: B03002

\*Hispanic or Latino Origin represents ethnicity data rather than racial. These figures have been kept out of the calculation for total minority as they could result in duplication of individuals also reporting as a racial group listed in this table.

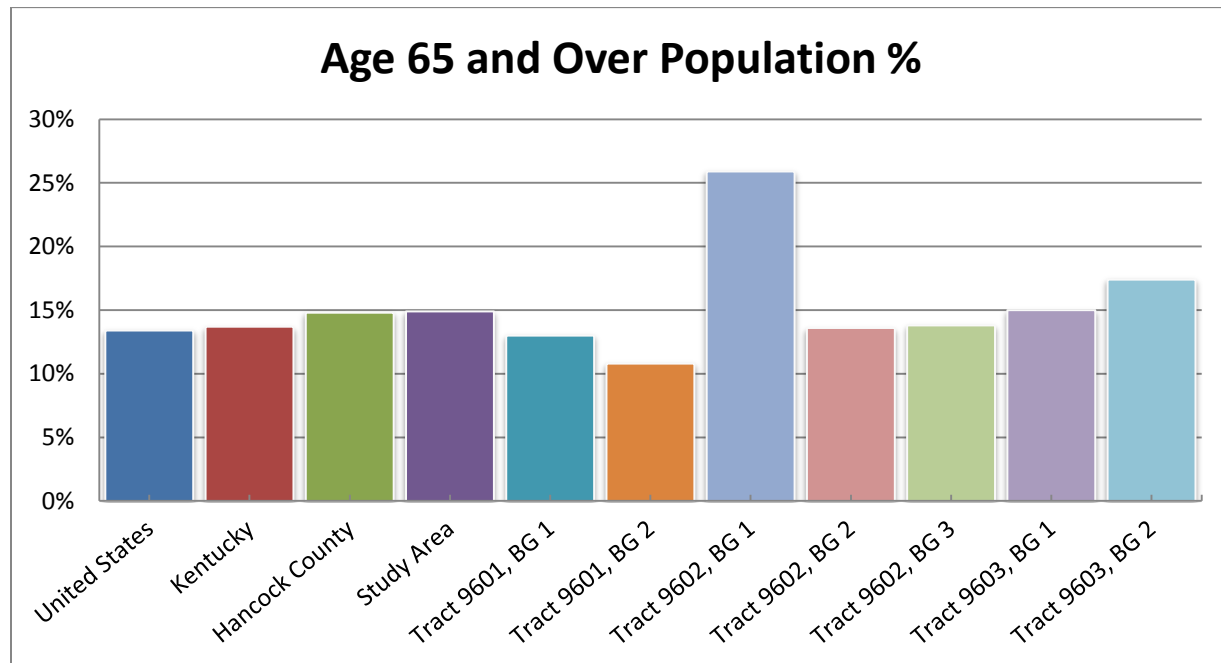
# Population by Persons of Hispanic or Latino Origin



Source: United States Census 2013 American Community Survey  
 This map was produced in cooperation with the Kentucky Transportation Cabinet



## Population by Persons Age 65 Years and Older



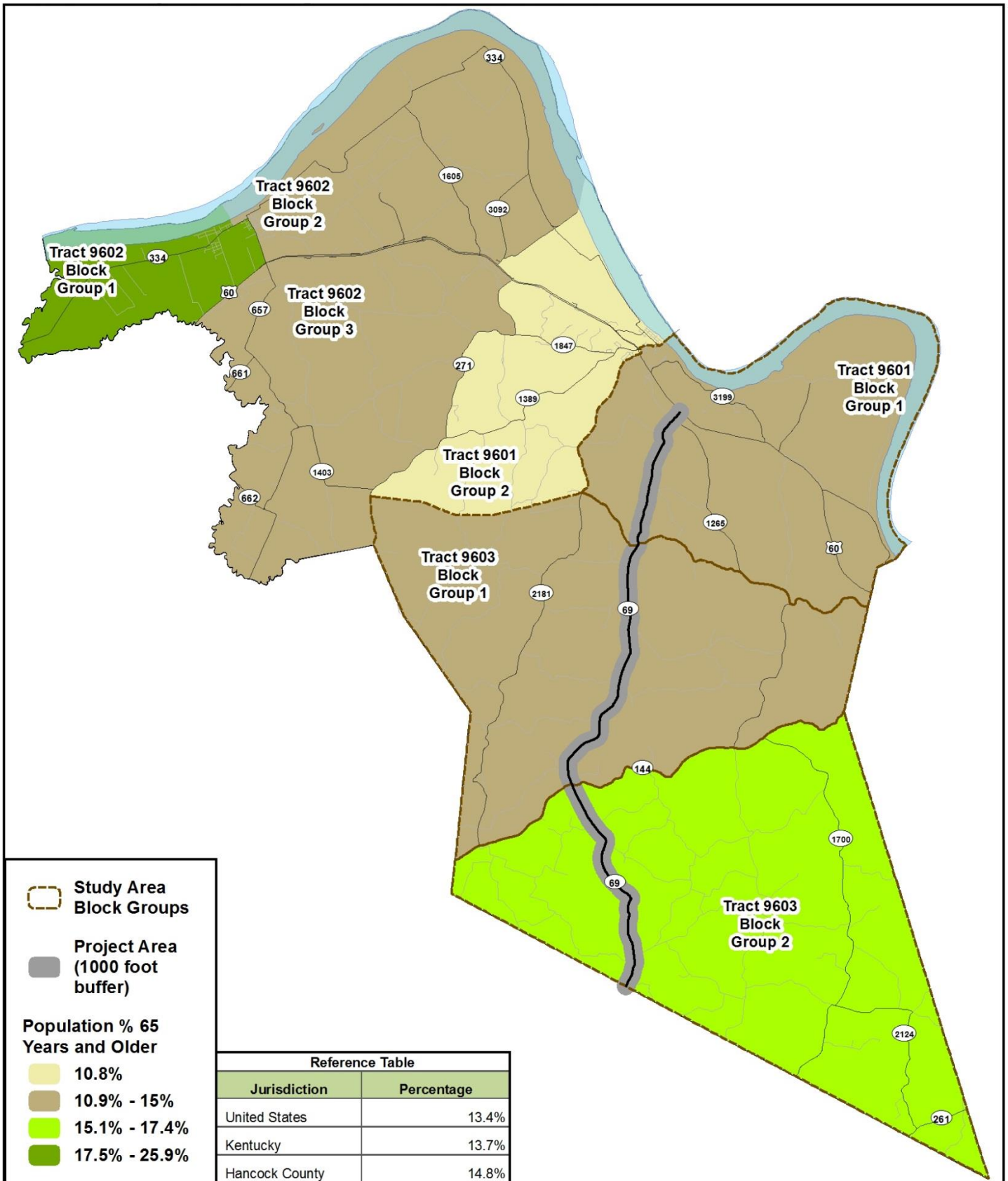
Hancock County has a higher percentage (14.8%) of *Persons Age 65 Years and Older* than both the state (13.7%) and the U.S. (13.4%). Block Group (BG) 1 and BG 3 of Census Tract (CT) 9602 and BG 1 and BG 2 of CT 9603 in the study area have elevated percentages of elderly persons. BG 1 of CT 9602 reports 25.9% and BG 3 reports 13.8% of persons being 65 years or older. BG 1 and B 2 of CT 9603 reported 15% and 17.4% respectively.

	Total	Persons 65 and Over (%)
<b>United States</b>	311,536,594	13.4%
<b>Kentucky</b>	4,361,333	13.7%
<b>Hancock County</b>	8,608	14.8%
<b>Study Area</b>	3,671	14.9%
<b>Tract 9601, BG 1</b>	1,267	13.0%
<b>Tract 9601, BG 2</b>	1,669	10.8%
<b>Tract 9602, BG 1</b>	795	25.9%
<b>Tract 9602, BG 2</b>	865	13.6%
<b>Tract 9602, BG 3</b>	1,608	13.8%
<b>Tract 9603, BG 1</b>	1,449	15.0%
<b>Tract 9603, BG 2</b>	955	17.4%

Source: US Census Bureau,  
2009-2013 American Community Survey - Table: BO1001



## Population by Persons Age 65 Years and Older



Study Area Block Groups

Project Area (1000 foot buffer)

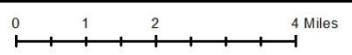
**Population % 65 Years and Older**

- 10.8%
- 10.9% - 15%
- 15.1% - 17.4%
- 17.5% - 25.9%

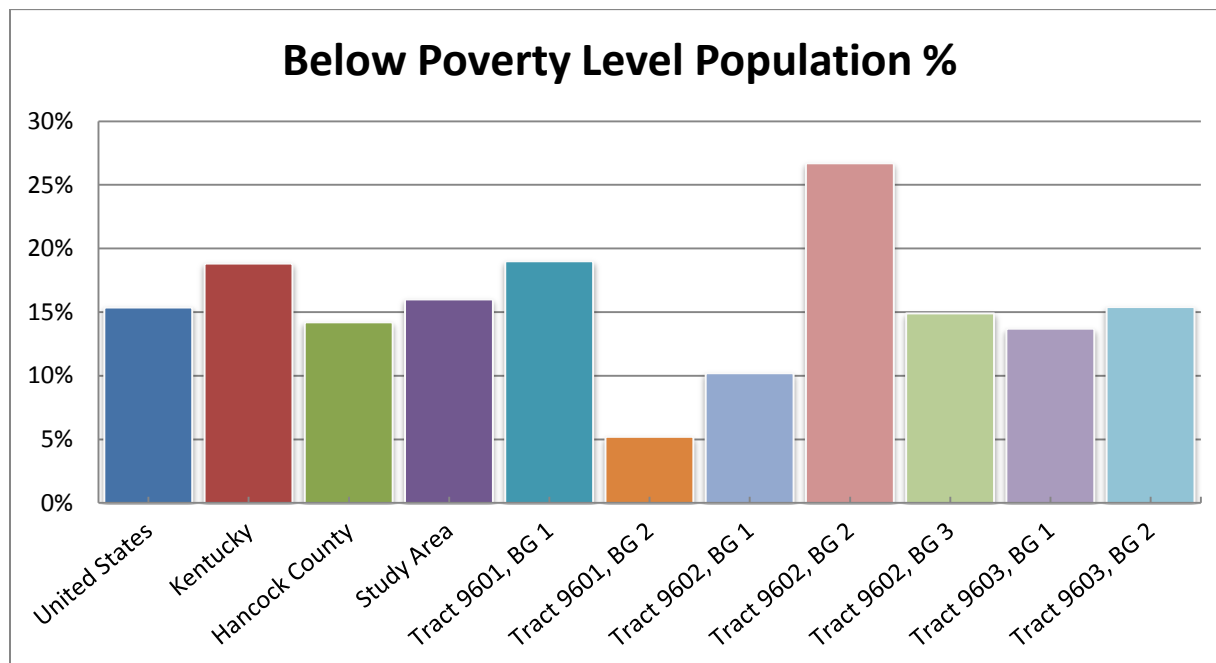
Reference Table	
Jurisdiction	Percentage
United States	13.4%
Kentucky	13.7%
Hancock County	14.8%



Source: United States Census 2013 American Community Survey  
 This map was produced in cooperation with the Kentucky Transportation Cabinet



## Population by Persons below Poverty Level



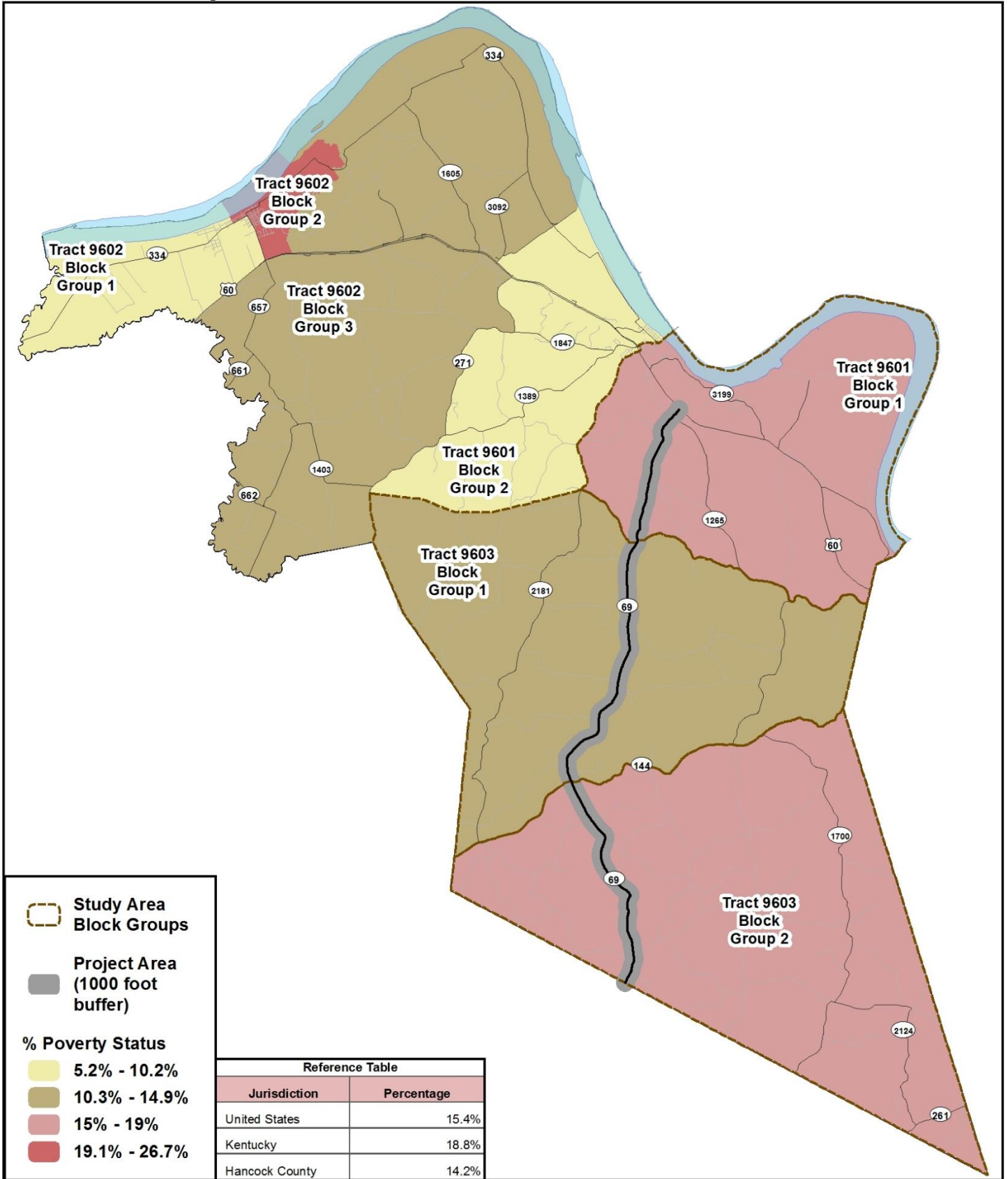
The percentage of persons living below the poverty level in Kentucky (18.8%) is higher than that of the United States (15.4%). Hancock County has a lower percentage than the state or nation at 14.2%. Block Group (BG) 1 of Census Tract (CT) 9601 has higher levels of poverty than does the county, state, and U.S with 19.0% of persons living below the poverty level. BG 2 and BG 3 of 9602 reports 26.7% and 14.9% and BG 2 of CT 9603 reports 15.4% population living below the poverty level.

	Total	Population Below Poverty Level (%)
<b>United States</b>	303,692,076	15.4%
<b>Kentucky</b>	4,230,912	18.8%
<b>Hancock County</b>	8,542	14.2%
<b>Study Area</b>	3,666	16.0%
<b>Tract 9601, BG 1</b>	1,262	19.0%
<b>Tract 9601, BG 2</b>	1,648	5.2%
<b>Tract 9602, BG 1</b>	795	10.2%
<b>Tract 9602, BG 2</b>	865	26.7%
<b>Tract 9602, BG 3</b>	1,568	14.9%
<b>Tract 9603, BG 1</b>	1,449	13.7%
<b>Tract 9603, BG 2</b>	955	15.4%

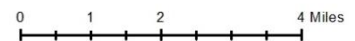
Source: US Census Bureau,  
2009-2013 American Community Survey - Table: B17021



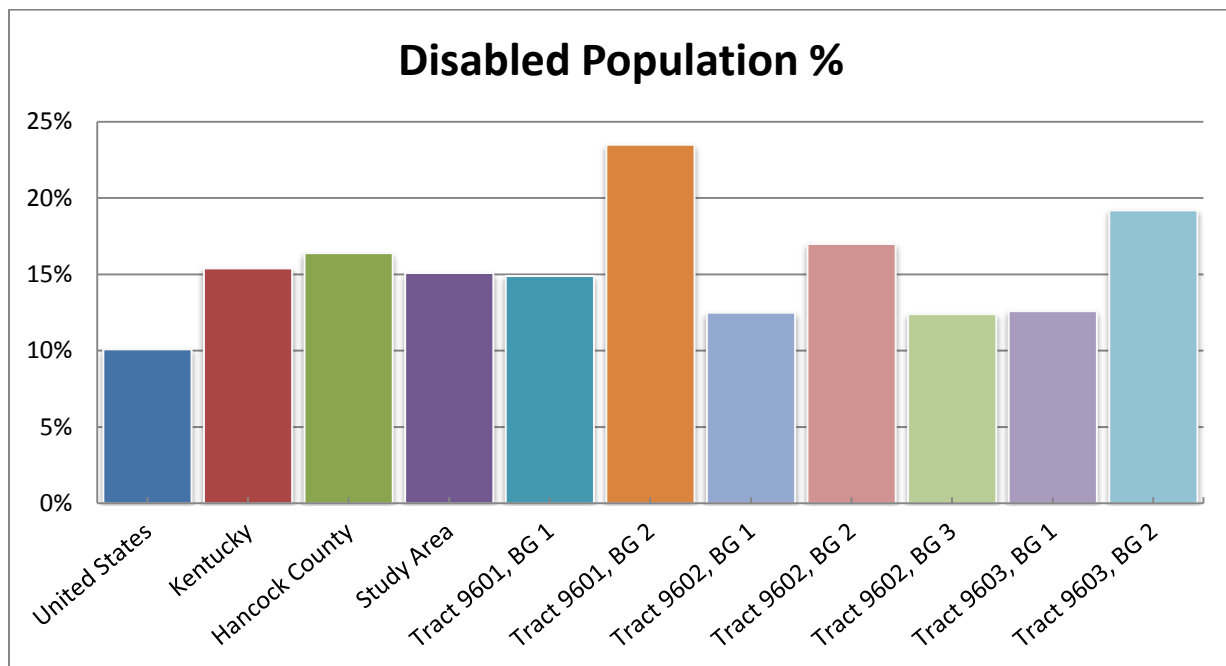
## Population by Persons below Poverty Level



Source: United States Census 2013 American Community Survey  
 This map was produced in cooperation with the Kentucky Transportation Cabinet



## Population by Disability Status

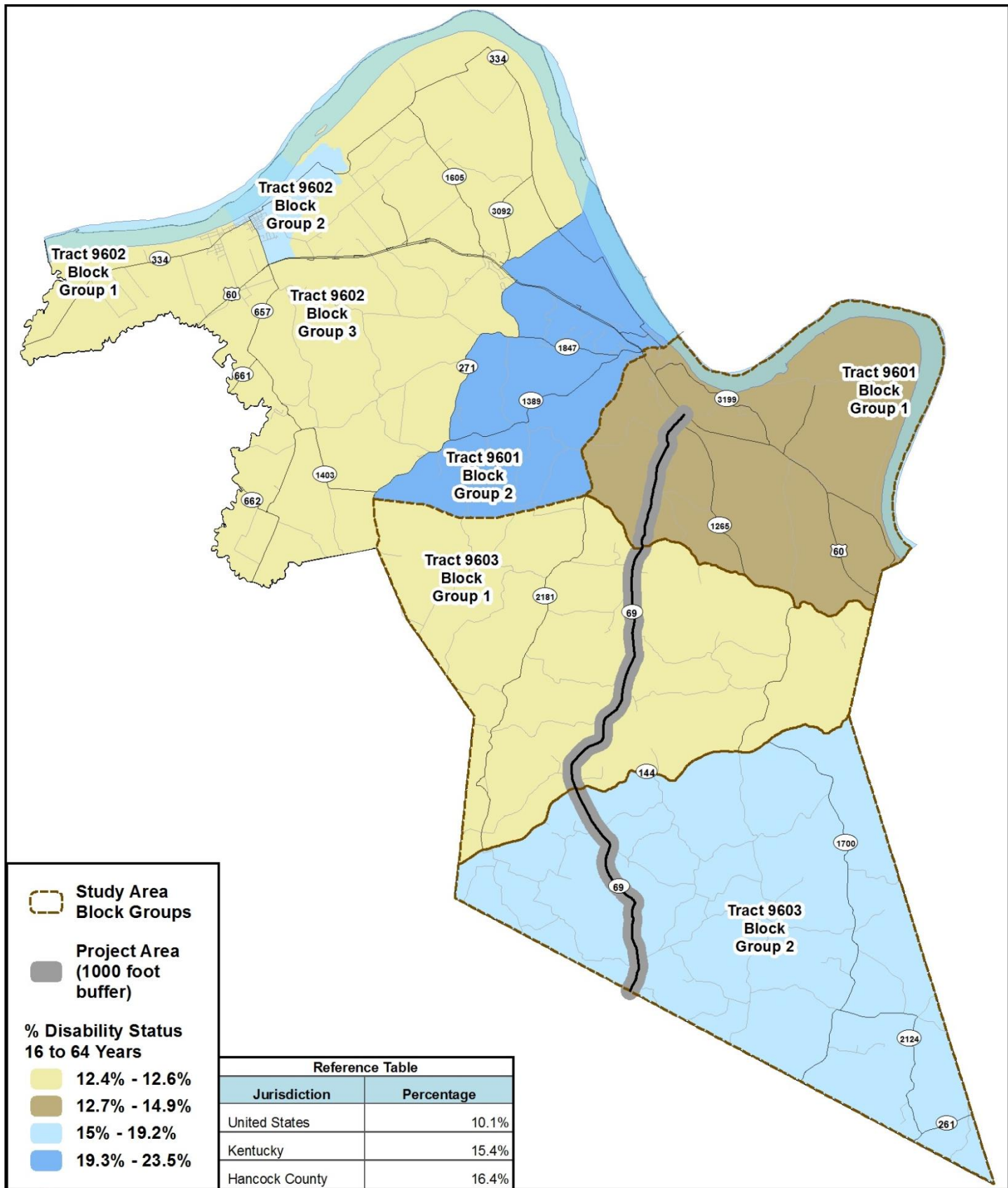


According to 2009-2013 American Community Survey numbers, Kentucky had 15.4% percent of its civilian non-institutionalized population age 16-64 with some type of disability. This is higher than the national percentage (10.1%). Hancock County also reports a higher percentage of disabled persons (16.4%) than does the state and nation. 2009-2013 ACS data shows Block Group (BG) 2 of Census Tract (CT) 9601 with 23.5%; BG 2 of CT 9602 with 17% and BG 2 of CT 9603 reporting 19.2% of disabled persons.

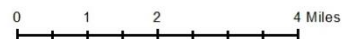
	Total Civilian Non-institutionalized Population (Age 16-64)	Disabled Civilian Non-institutionalized Population (%) (Age 16-64)
United States	204,340,912	10.1%
Kentucky	2,856,232	15.4%
Hancock County	5,400	16.4%
Study Area	2,377	15.1%
Tract 9601, BG 1	810	14.9%
Tract 9601, BG 2	1,123	23.5%
Tract 9602, BG 1	463	12.5%
Tract 9602, BG 2	513	17.0%
Tract 9602, BG 3	924	12.4%
Tract 9603, BG 1	951	12.6%
Tract 9603, BG 2	616	19.2%

Source: US Census Bureau,  
2009-2013 American Community Survey - Table: C23023

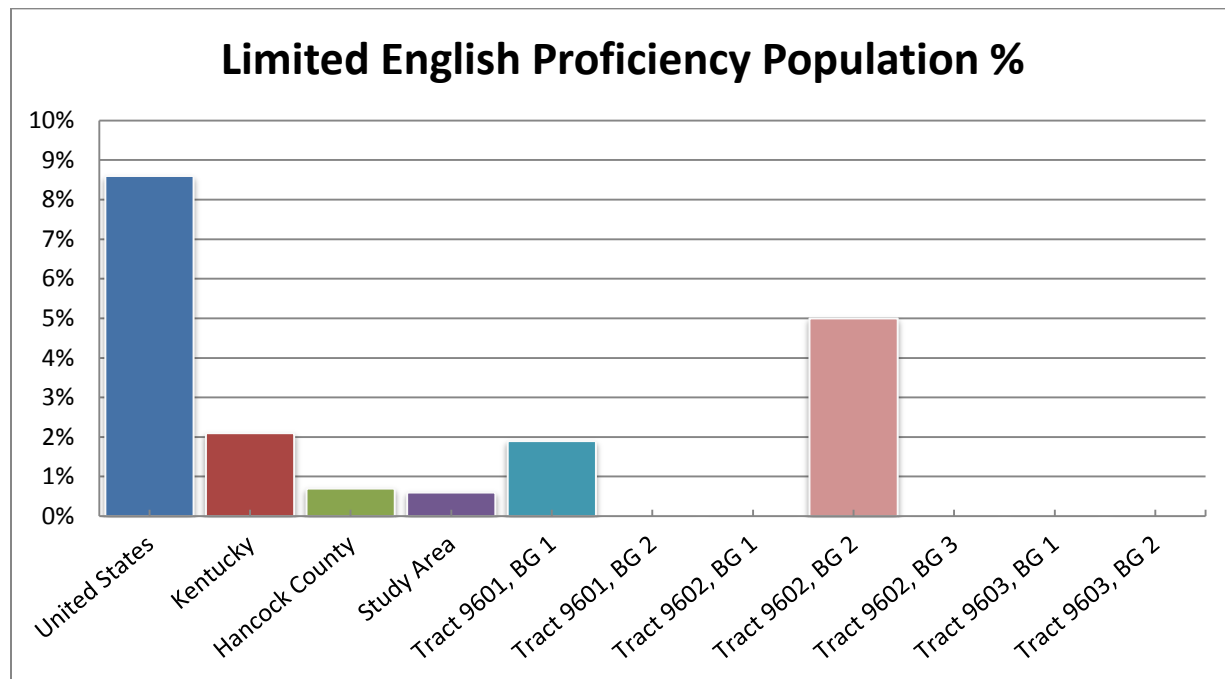
# Population by Disability Status



Source: United States Census 2013 American Community Survey  
 This map was produced in cooperation with the Kentucky Transportation Cabinet



## Population by Persons with Limited English Proficiency



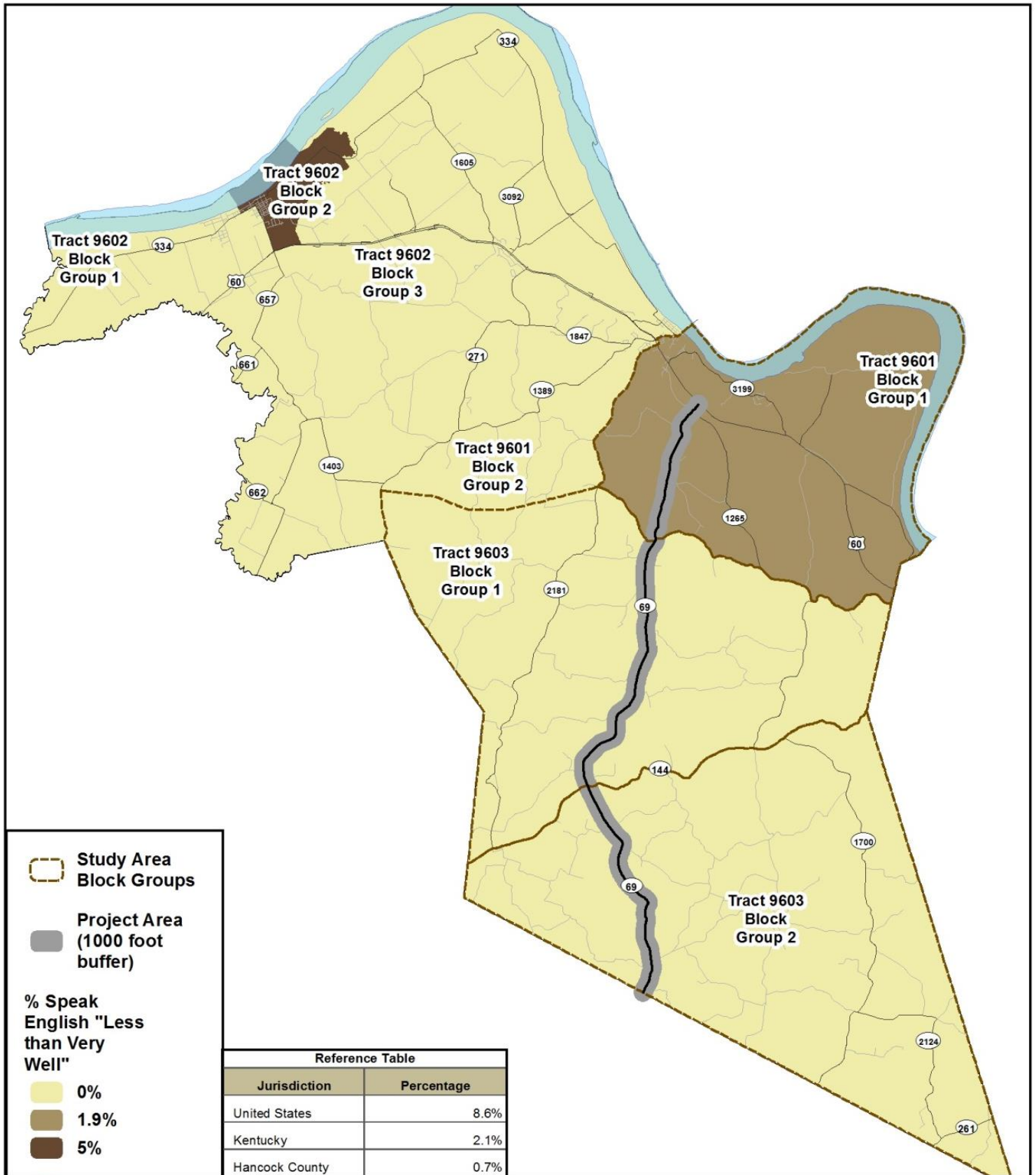
Persons with Limited English Proficiency (LEP) in the United States make up 8.6% of the population, but in Kentucky that percentage decreases to just 2.1%. Hancock County has an even lower percentage of persons with LEP than that of the state and United States with 0.7% being reported by the 2009-2013 American Community Survey. Block Group (BG) 1 of Census Tract (CT) 9601 displays 1.9% and BG 2 of CT 9602 reports 5% persons with limited English proficiency.

	Total Population for Whom English Language Proficiency is Determined (Age 5+)	Population with Limited English Proficiency (%) (Age 5+)
<b>United States</b>	291,484,482	8.6%
<b>Kentucky</b>	4,082,467	2.1%
<b>Hancock County</b>	8,066	0.7%
<b>Study Area</b>	3,397	0.6%
<b>Tract 9601, BG 1</b>	1,114	1.9%
<b>Tract 9601, BG 2</b>	1,593	0.0%
<b>Tract 9602, BG 1</b>	748	0.0%
<b>Tract 9602, BG 2</b>	786	5.0%
<b>Tract 9602, BG 3</b>	1,542	0.0%
<b>Tract 9603, BG 1</b>	1,388	0.0%
<b>Tract 9603, BG 2</b>	895	0.0%

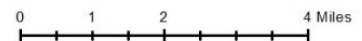
Source: US Census Bureau, 2009-2013 American Community Survey - Table: B16004



## Population by Persons with Limited English Proficiency



Source: United States Census 2013 American Community Survey  
 This map was produced in cooperation with the Kentucky Transportation Cabinet



## Conclusion

Analysis of Block Group 1 of Census Tract 9601 shows racial minorities (4%), population below poverty level (19%), and population with limited English proficiency (1.9%) located in this area relative to the county.

Block Group 2 of Census Tract 9601 shows persons disabled (23.5%). The percentage is higher than the county, state and nation percentages.

Block Group 1 of Census Tract 9602 shows person 65 and over (25.9%) located in this area relative to the county, state and nation.

Block Group 2 of Census Tract 9602 shows minorities (19.4%), Hispanic or Latino origin (9.4%), population below poverty level (26.7%), persons disabled (17%) and population with limited English proficiency (5%). All are higher than the county percentages.

Block Group 3 of Census Tract 9602 shows both persons 65 and over (13.8%) and population below poverty level (14.9%). The percentage of persons 65 and over is higher than the state and nation. The population below poverty level is higher than the county percentages.

Block Group 1 of Census Tract 9603 shows persons 65 and over (15%) relative to both the state and nation percentages.

Block Group 2 of Census Tract 9603 shows persons 65 and over (17.4%), population below poverty (15.4%) and persons disabled (19.2%). The percentages are higher than the county percentages.

During future phases of project development a more detailed and robust analysis would be required for the NEPA documentation when assessing the potential for adverse and disproportionate impacts to poverty status, and minority populations.

## Appendix



## Appendix A: Methodology from KYTC

Updated: September 2014

### **Methodology for Assessing Underserved Populations including Environmental Justice, Title VI, Age and Disability considerations in conjunction with KYTC Planning Studies**

#### **Cover Page**

Title: Insert specific study type/area

Subtitle: Socioeconomic Study

Date:

Author:

#### **Analysis**

Environmental Justice (EJ) refers to the fair treatment of all people regardless of race, color, national origin or income. Specifically, agencies must demonstrate meaningful involvement with the above stated groups with respect to development, implementation and enforcement of environmental laws, regulations and policies. EJ analysis is undertaken for any study that may result in impacts on a minority and/or low income population that has a federal nexus (funding or approval).

Additionally KYTC works to identify potential populations of the Elderly, Disabled, Limited English Proficiency and Limited Transportation Options that may be impacted in or near the Affected Community (AC) should highway improvements take place in the future.

Examples of these studies include, but are not limited to:

- Corridor Studies
- Traffic Studies
- Small Urban Area Studies
- Feasibility Studies
- Interchange Justification Studies
- Interchange Modification Reports

(AC) with potential EJ impacts are determined by locating populations of minority, low-income, disabled or elderly and calculating their percentage in the area relative to a reference community of comparison (COC).

Communities of comparison:

- The county percentage
- Kentucky percentage
- Block groups within reasonable proximity of the study area

The demographics of the study area should be defined using block group data accessed via the American Community Survey 5 year data. KYTC will work in conjunction with the State Data Center to provide pertinent spatial data on a yearly basis for the following, as the update schedule allows:

- Minority
- Low-income
- Elderly ( 65+ )
- Disabled populations
- Limited English Proficiency

\*\*\*\*The following disclaimer should be included in the document in the Socioeconomic Study methodologies Section\*\*\*\*

The methodologies used in this planning document are appropriate for identifying possible areas of concern in small urban areas and potential project corridors. However, during future phases of project development a more detailed and robust analysis would be required for the NEPA documentation when assessing the potential for adverse and disproportionate impacts to low-income and minority populations.